

[Home](#) ■ [Products](#) ■ [Safe Access Solutions](#) ■ [Technical Doors](#) ■ [Safety Door](#)

Security Door



The successful improvement of our safety doors

Completely made from 1.4307 stainless steel (AISI 304 L) and certified to security of DIN EN 1627, burglar and attack proof.

Our safety doors are applicable as access to buildings, especially in the field of potable water supply and for plants with increased security requirements. They are available in resistance class RC3 and RC4.

Single Security Door TT2.1/RC3

Access door for buildings in the field of potable water supply equipped with a burglar alarm system

Security door, burglar and attack proof, certified to security of DIN EN 1627, resistance class RC3, ready for installation, double skinned, completely made from 1.4307 stainless steel (AISI 304 L), with double rubber seal, the door and frame closing flush, the door opening to the outside (in escape direction). Sound insulation: 34/29 dB.

Security class RC3 is recommended by the criminal investigation department if the building is additionally secured by means of a burglar alarm system.



Double Security Door TT2.2/RC3

Access door for buildings in the field of potable water supply equipped with a burglar alarm system

Security door, burglar and attack proof, certified to security of DIN EN 1627, resistance class RC3, ready for installation, double skinned, completely made from 1.4307 (AISI 304 L) stainless steel, with double rubber seal, the door leaves and frame closing flush, the fixable and swing leaf opening to the outside (in escape direction). Sound insulation: 34/29 dB.

Security class RC3 is recommended by the criminal investigation department if the building is additionally secured by means of a burglar alarm system.



Single Security Door TT2.1/RC4

Access door for buildings in the field of potable water supply without a burglar alarm system.

Security door, burglar and attack proof, certified to security of DIN EN 1627, resistance class RC4, ready for installation, double skinned, completely made from 1.4307 stainless steel (AISI 304 L), with double rubber seal, the door and frame closing flush, the door opening to the outside (in escape direction). Sound insulation: 34/29 dB.

Security class RC4 is recommended by the criminal investigation department if the building is not secured by means of a burglar alarm system.



Double Security Door TT2.2/RC4

Access door for buildings in the field of potable supply without a burglar alarm system

Security door, burglar and attack proof, certified to security of DIN EN 1627, resistance class RC4, ready for installation, double skinned, completely made from 1.4307 (AISI 304 L) stainless steel, with double rubber seal, the door leaves and frame closing flush, the fixable and swing leaf opening to the outside (in escape direction). Sound insulation: 34/29 dB.

Security class RC4 is recommended by the criminal investigation department if the building is not secured by means of a burglar alarm system.



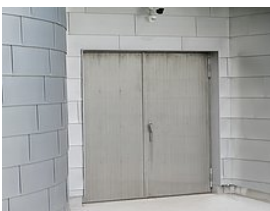
Download Documents

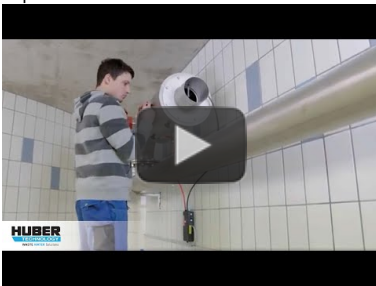
Here you will find extensive planning documents and customer information.

For quick and easy download, all documents of a product are packed together into one complete ZIP file:

- [Single Security Door TT2.1/RC3](#)
- [Double Security Door TT2.2/RC3](#)
- [Single Security Door TT2.1/RC4](#)
- [Double Security Door TT2.2/RC4](#)

Media





Object protection with HUBER
Safety Doors

<https://www.youtube.com/watch?v=qYmQS7umU-0>

Case Studies

- [Learn more about HUBER Technology's Stainless Steel Technical Doors](#)
- [Burglar resistance – efficiency on a new level](#)
- [HUBER RC3 safety doors meet any requirements](#)
- [Eight RC3 safety doors supplied to Leibnitzerfeld Wasserversorgung in Austria](#)
- [Stadtwerke Bielefeld continue to invest into HUBER products for the refurbishment of water reservoirs](#)
- [Water reservoir Talstraße renovated](#)

More products of this group: Technical Doors

- [Stainless Steel Doors](#)
- [Chlorine Room Door](#)
- [Flood-proof Door](#)
- [Pressure-tight Door](#)
- [Access/Inspection Cover](#)
- [Louvre](#)
- [Windows](#)



ROTAMAT Ltd. t/a HUBER Technology
Units C&D Brunel Park Bumpers Farm Ind. Est.
Chippenham Wiltshire SN14 6NQ
Registered in England No. 2874696 VAT Registration No. 639396393
Telephone: 01249 765000
rotamat@huber.co.uk www.huber.co.uk

A member of the HUBER Group

